

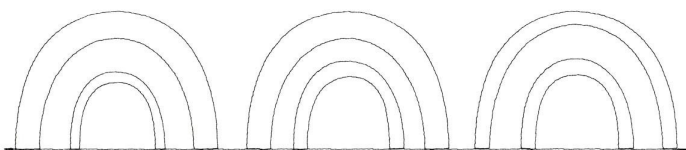
Note: Some designs in this collection may have been created using unique special stitches and/or techniques. To preserve design integrity when rescaling or rotating designs in your software, always rescale or rotate designs using the handles directly on-screen.

PK80013-01 Bows | PK80013-01

Size Inches: Size mm: Stitch Count:

9.99 X 2.02 in. 253.75 X 51.31 mm 943 St.

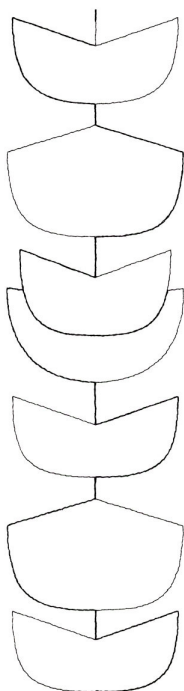
■ 1.Single Color Design.....0020

**PK80013-02 Ebb**

Size Inches: Size mm: Stitch Count:

8.50 X 2.20 in. 215.90 X 55.88 mm 978 St.

■ 1.Single Color Design.....0020



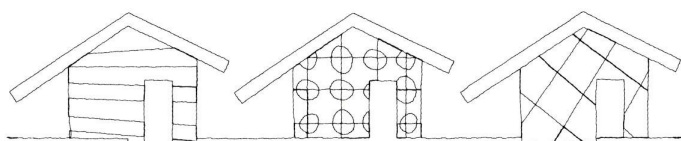
Note: Some designs in this collection may have been created using unique special stitches and/or techniques. To preserve design integrity when rescaling or rotating designs in your software, always rescale or rotate designs using the handles directly on-screen.

PK80013-03 Outhouse | PK80013-03

Size Inches: Size mm: Stitch Count:

10.25 X 2.02 in. 260.35 X 51.31 mm 1574 St.

■ 1.Single Color Design.....0020

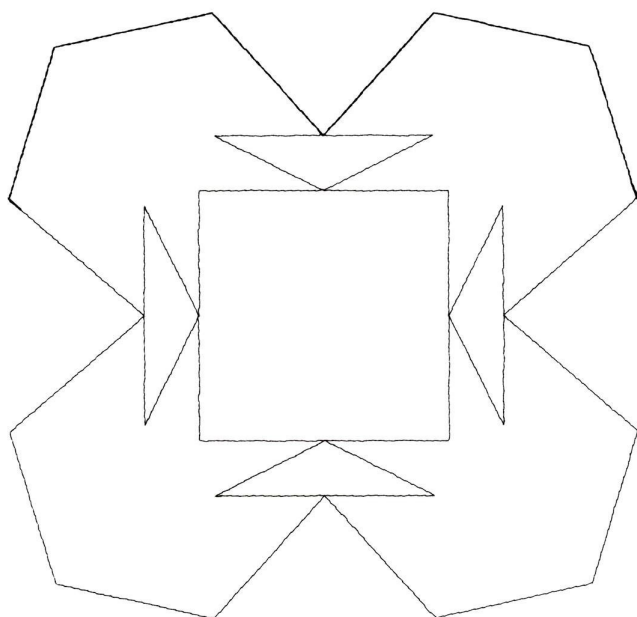


PK80013-04 Rye

Size Inches: Size mm: Stitch Count:

5.75 X 6.00 in. 146.05 X 152.40 mm 891 St.

■ 1.Single Color Design.....0020



Note: Some designs in this collection may have been created using unique special stitches and/or techniques. To preserve design integrity when rescaling or rotating designs in your software, always rescale or rotate designs using the handles directly on-screen.

PK80013-05 Shirts

Size Inches: Size mm: Stitch Count:

4.04 X 4.29 in. 102.62 X 108.97 mm 528 St.

■ 1.Single Color Design.....0020

