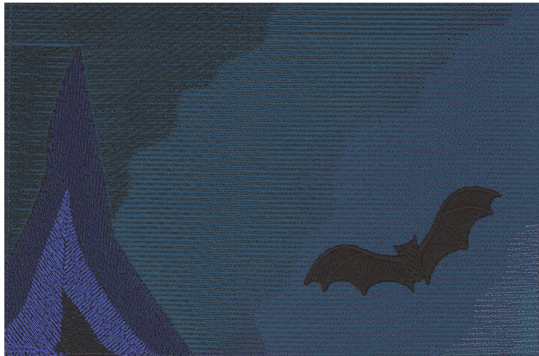


Note: Some designs in this collection may have been created using unique special stitches and/or techniques. To preserve design integrity when rescaling or rotating designs in your software, always rescale or rotate designs using the handles directly on-screen.

12945-01 Tile 1 | 12945-01

Size Inches: Size mm: Stitch Count:

6.87 X 4.55 in. 174.50 X 115.57 mm 17133 St.

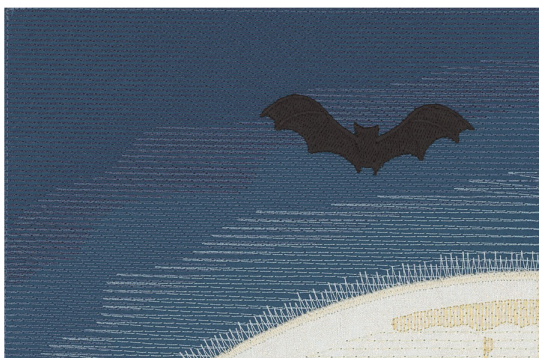



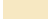
	1.Sky.....	4032
	2.Sky.....	4133
	3.Sky.....	3666
	4.Tree.....	0020
	5.Tree.....	3323
	6.Tree.....	3612
	7.Bat.....	0020
	8.Seam Stitch/Match Fabric.....	4133

12945-02 Tile 2 | 12945-02

Size Inches: Size mm: Stitch Count:

6.87 X 4.55 in. 174.50 X 115.57 mm 11246 St.



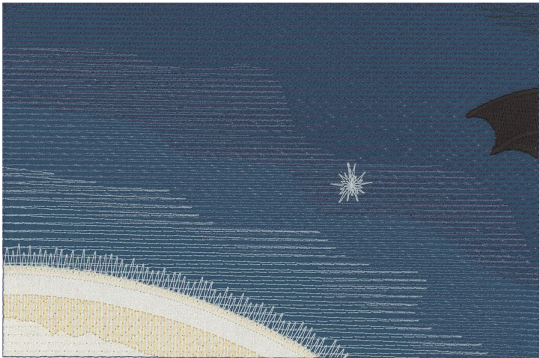
	1.Cream Fabric Placement Stitch.....	0870
	2.Cut Line and Tackdown.....	0870
	3.Sky.....	4152
	4.Moon Glow.....	3963
	5.Moon Cover Stitch.....	0870
	6.Sky.....	4032
	7.Sky.....	4133
	8.Bat.....	0020
	9.Moon.....	0660
	10.Moon.....	0651
	11.Seam Stitch/Match Fabric.....	0870

Note: Some designs in this collection may have been created using unique special stitches and/or techniques. To preserve design integrity when rescaling or rotating designs in your software, always rescale or rotate designs using the handles directly on-screen.

12945-03 Tile 3 | 12945-03

Size Inches: Size mm: Stitch Count:

6.87 X 4.57 in. 174.50 X 116.08 mm 10659 St.

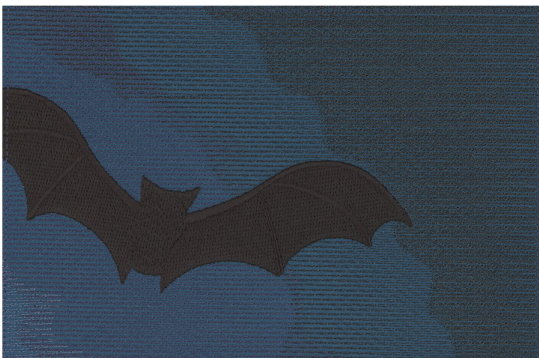







	1. Cream Fabric Placement Stitch.....	0870
	2. Cut Line and Tackdown.....	0870
	3. Sky.....	4152
	4. Moon Glow.....	3963
	5. Moon Cover Stitch.....	0870
	6. Sky.....	4032
	7. Sky.....	4133
	8. Sky.....	3666
	9. Bat.....	0020
	10. Moon.....	0660
	11. Moon.....	0651
	12. Star.....	4071
	13. Seam Stitch/Match Fabric.....	0870

12945-04 Tile 4 | 12945-04

Size Inches: Size mm: Stitch Count:

6.87 X 4.55 in. 174.50 X 115.57 mm 19169 St.



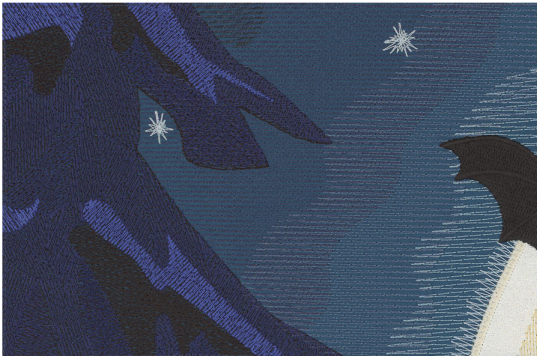
	1. Sky.....	4032
	2. Sky.....	4133
	3. Sky.....	3666
	4. Bat.....	0020
	5. Seam Stitch/Match Fabric.....	4133

Note: Some designs in this collection may have been created using unique special stitches and/or techniques. To preserve design integrity when rescaling or rotating designs in your software, always rescale or rotate designs using the handles directly on-screen.

12945-05 Tile 5 | 12945-05

Size Inches: Size mm: Stitch Count:

6.87 X 4.57 in. 174.50 X 116.08 mm 21713 St.



	1. Cream Fabric Placement Stitch.....	0870
	2. Cut Line and Tackdown.....	0870
	3. Sky.....	4152
	4. Moon Glow.....	3963
	5. Moon Cover Stitch.....	0870
	6. Moon.....	0660
	7. Moon.....	0651
	8. Sky.....	4032
	9. Sky.....	4133
	10. Sky.....	3666
	11. Tree.....	0020
	12. Tree.....	3323
	13. Tree.....	3612
	14. Stars.....	4071
	15. Bat.....	0020
	16. Seam Stitch/Match Fabric.....	0870

12945-06 Tile 6 | 12945-06

Size Inches: Size mm: Stitch Count:

6.86 X 4.57 in. 174.24 X 116.08 mm 13033 St.



	1. Cream Fabric Placement Stitch.....	0870
	2. Cut Line and Tackdown.....	0870
	3. Sky.....	4152
	4. Sky.....	4032
	5. Star.....	4071
	6. Moon Glow.....	3963
	7. Moon Cover Stitch.....	0870
	8. Moon.....	0660
	9. Moon.....	0651
	10. Bat and Axe.....	0020
	11. Highlight.....	4515
	12. Seam Stitch/Match Fabric.....	0870

Note: Some designs in this collection may have been created using unique special stitches and/or techniques. To preserve design integrity when rescaling or rotating designs in your software, always rescale or rotate designs using the handles directly on-screen.

12945-07 Tile 7 | 12945-07

Size Inches: Size mm: Stitch Count:

6.88 X 4.60 in. 174.75 X 116.84 mm 11856 St.

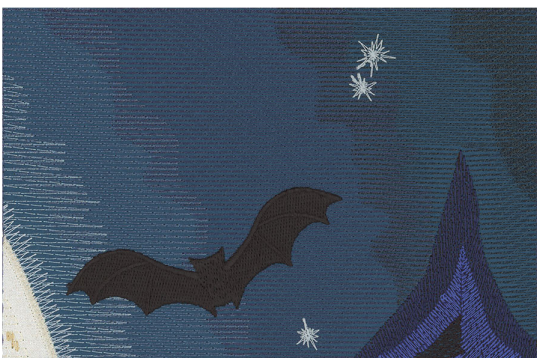


	1. Cream Fabric Placement Stitch.....	0870
	2. Cut Line and Tackdown.....	0870
	3. Black Fabric Placement Stitch.....	0020
	4. Cut Line and Tackdown.....	0020
	5. Sky.....	4152
	6. Sky.....	4032
	7. Moon Glow.....	3963
	8. Moon Cover Stitch.....	0870
	9. Moon.....	0660
	10. Moon.....	0651
	11. Bat/ Cover Stitch and Detail.....	0020
	12. Highlight.....	4515
	13. Seam Stitch/Match Fabric.....	0870

12945-08 Tile 8 | 12945-08

Size Inches: Size mm: Stitch Count:

6.89 X 4.56 in. 175.01 X 115.82 mm 16566 St.



	1. Cream Fabric Placement Stitch.....	0870
	2. Cut Line and Tackdown.....	0870
	3. Sky.....	4152
	4. Moon Glow.....	3963
	5. Moon Cover Stitch.....	0870
	6. Sky.....	4032
	7. Sky.....	4133
	8. Sky.....	3666
	9. Tree.....	0020
	10. Tree.....	3323
	11. Tree.....	3612
	12. Moon.....	0660
	13. Moon.....	0651
	14. Stars.....	4071
	15. Bat.....	0020
	16. Seam Stitch/Match Fabric.....	0870

Note: Some designs in this collection may have been created using unique special stitches and/or techniques. To preserve design integrity when rescaling or rotating designs in your software, always rescale or rotate designs using the handles directly on-screen.

12945-09 Tile 9 | 12945-09

Size Inches: Size mm: Stitch Count:

6.86 X 4.57 in. 174.24 X 116.08 mm 22754 St.

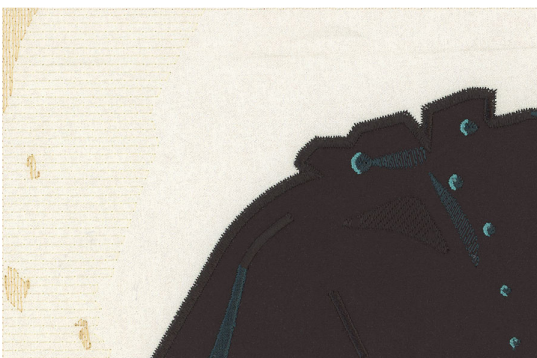


	1. Cream Fabric Placement Stitch.....	0870
	2. Cut Line and Tackdown.....	0870
	3. Sky.....	4152
	4. Moon Glow.....	3963
	5. Moon Cover Stitch.....	0870
	6. Moon.....	0660
	7. Moon.....	0651
	8. Sky.....	4032
	9. Sky.....	4133
	10. Tree.....	0020
	11. Tree.....	3323
	12. Tree.....	3612
	13. Star.....	4071
	14. Seam Stitch/Match Fabric.....	0870

12945-10 Tile 10 | 12945-10

Size Inches: Size mm: Stitch Count:

6.85 X 4.55 in. 173.99 X 115.57 mm 5055 St.



	1. Black Fabric Placement Stitch.....	0020
	2. Cut Line and Tackdown.....	0020
	3. Moon.....	0660
	4. Moon.....	0651
	5. Cover Stitch and Detail.....	0020
	6. Highlights.....	4515
	7. Highlights.....	4620
	8. Seam Stitch/Match Fabric.....	0870

Note: Some designs in this collection may have been created using unique special stitches and/or techniques. To preserve design integrity when rescaling or rotating designs in your software, always rescale or rotate designs using the handles directly on-screen.

12945-11 Tile 11 | 12945-11

Size Inches: Size mm: Stitch Count:

6.85 X 4.58 in. 173.99 X 116.33 mm 9291 St.

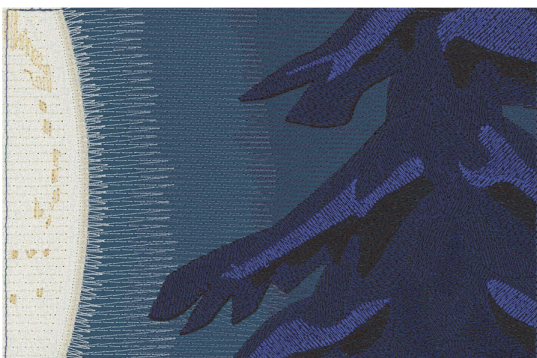


■	1.Black Fabric Placement Stitch.....	0020
■	2.Cut Line and Tackdown.....	0020
■	3.Moon.....	0660
■	4.Moon.....	0651
■	5.Cover Stitch and Detail.....	0020
■	6.Highlights.....	4515
■	7.Eye Shine.....	4620
■	8.Seam Stitch/Match Fabric.....	0870

12945-12 Tile 12 | 12945-12

Size Inches: Size mm: Stitch Count:

6.86 X 4.57 in. 174.24 X 116.08 mm 21297 St.



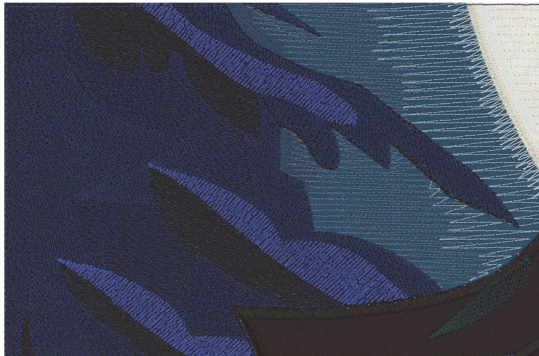
■	1.Cream Fabric Placement Stitch.....	0870
■	2.Cut Line and Tackdown.....	0870
■	3.Sky.....	4152
■	4.Moon Glow.....	3963
■	5.Moon Cover Stitch.....	0870
■	6.Sky.....	4032
■	7.Sky.....	4133
■	8.Tree.....	0020
■	9.Tree.....	3323
■	10.Tree.....	3612
■	11.Moon.....	0660
■	12.Moon.....	0651
■	13.Seam Stitch/Match Fabric.....	0870

Note: Some designs in this collection may have been created using unique special stitches and/or techniques. To preserve design integrity when rescaling or rotating designs in your software, always rescale or rotate designs using the handles directly on-screen.

12945-13 Tile 13 | 12945-13

Size Inches: Size mm: Stitch Count:

6.88 X 4.59 in. 174.75 X 116.59 mm 22218 St.

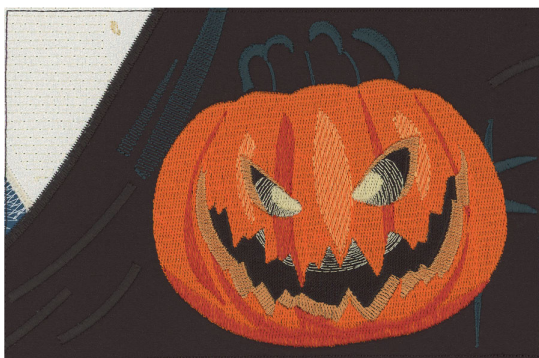


	1. Cream Fabric Placement Stitch.....	0870
	2. Cut Line and Tackdown.....	0870
	3. Black Fabric Placement Stitch.....	0020
	4. Cut Line and Tackdown.....	0020
	5. Sky.....	4152
	6. Moon Glow.....	3963
	7. Moon Cover Stitch.....	0870
	8. Moon.....	0660
	9. Sky.....	4032
	10. Sky.....	4133
	11. Cover Stitch and Detail.....	0020
	12. Highlight.....	4515
	13. Tree.....	3323
	14. Tree.....	3612
	15. Seam Stitch/Match Fabric.....	0870

12945-14 Tile 14 | 12945-14

Size Inches: Size mm: Stitch Count:

6.88 X 4.54 in. 174.75 X 115.32 mm 25726 St.



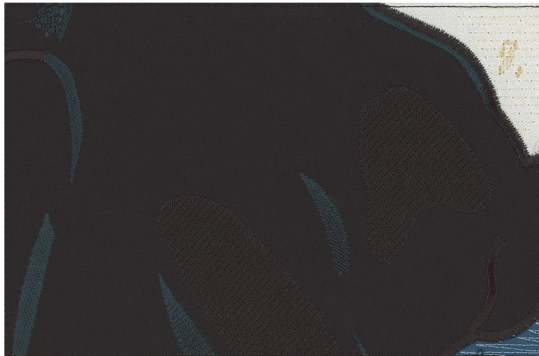
	1. Cream Fabric Placement Stitch.....	0870
	2. Cut Line and Tackdown.....	0870
	3. Black Fabric Placement Stitch.....	0020
	4. Cut Line and Tackdown.....	0020
	5. Sky.....	4152
	6. Moon Glow.....	3963
	7. Moon Cover Stitch.....	0870
	8. Moon.....	0660
	9. Moon.....	0651
	10. Horseman.....	0020
	11. Highlights.....	4515
	12. Inside Pumpkin.....	0020
	13. Pumpkin Glow.....	0520
	14. Pumpkin.....	1010
	15. Pumpkin.....	1310
	16. Pumpkin Shading.....	1335
	17. Pumpkin Highlights.....	1030
	18. Seam Stitch/Match Fabric.....	0870

Note: Some designs in this collection may have been created using unique special stitches and/or techniques. To preserve design integrity when rescaling or rotating designs in your software, always rescale or rotate designs using the handles directly on-screen.

12945-15 Tile 15 | 12945-15

Size Inches: Size mm: Stitch Count:

6.91 X 4.57 in. 175.51 X 116.08 mm 7511 St.

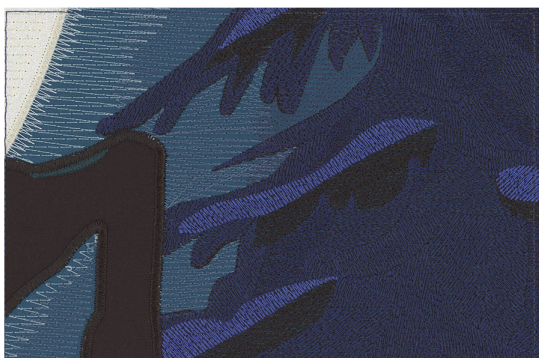


	1.Cream Fabric Placement Stitch.....	0870
	2.Cut Line and Tackdown.....	0870
	3.Black Fabric Placement Stitch.....	0020
	4.Cut Line and Tackdown.....	0020
	5.Sky.....	4152
	6.Moon Glow.....	3963
	7.Moon Cover Stitch.....	0870
	8.Moon.....	0660
	9.Moon.....	0651
	10.Cover Stitch and Detail.....	0020
	11.Highlights.....	4515
	12.Seam Stitch/Match Fabric.....	0870

12945-16 Tile 16 | 12945-16

Size Inches: Size mm: Stitch Count:

6.88 X 4.57 in. 174.75 X 116.08 mm 23611 St.



	1.Cream Fabric Placement Stitch.....	0870
	2.Cut Line and Tackdown.....	0870
	3.Black Fabric Placement Stitch.....	0020
	4.Cut Line and Tackdown.....	0020
	5.Sky.....	4152
	6.Moon Glow.....	3963
	7.Moon Cover Stitch.....	0870
	8.Moon.....	0660
	9.Sky.....	4032
	10.Sky.....	4133
	11.Leg Cover Stitch and Tree.....	0020
	12.Tree.....	3323
	13.Tree.....	3612
	14.Leg Highlight.....	4515
	15.Seam Stitch/Match Fabric.....	0870

Note: Some designs in this collection may have been created using unique special stitches and/or techniques. To preserve design integrity when rescaling or rotating designs in your software, always rescale or rotate designs using the handles directly on-screen.

12945-17 Tile 17

Size Inches: Size mm: Stitch Count:

6.89 X 4.59 in. 175.01 X 116.59 mm 24813 St.

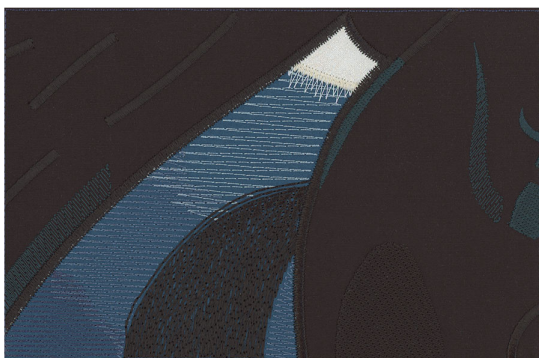


■	1.Black Fabric Placement Stitch.....	0020
■	2.Cut Line and Tackdown.....	0020
■	3.Sky.....	3666
■	4.Tree Trunk.....	0020
■	5.Sky.....	4133
■	6.Tree.....	0020
■	7.Tree.....	3323
■	8.Tree.....	3612
■	9.Headstone.....	4133
■	10.Headstone.....	3666
■	11.Headstone.....	3842
■	12.Cape Cover Stitch and Detail.....	0020
■	13.Cape Highlights.....	4515
■	14.Seam Stitch/Match Fabric.....	4133

12945-18 Tile 18

Size Inches: Size mm: Stitch Count:

6.87 X 4.55 in. 174.50 X 115.57 mm 11238 St.



■	1.Cream Fabric Placement Stitch.....	0870
■	2.Cut Line and Tackdown.....	0870
■	3.Black Fabric Placement Stitch.....	0020
■	4.Cut Line and Tackdown.....	0020
■	5.Sky.....	4152
■	6.Moon Glow.....	3963
■	7.Moon Cover Stitch.....	0870
■	8.Sky.....	4032
■	9.Sky.....	4133
■	10.Horse and Horseman Cover Stitch and ...	0020
■	11.Horse and Horseman Highlights.....	4515
■	12.Seam Stitch/Match Fabric.....	4133

Note: Some designs in this collection may have been created using unique special stitches and/or techniques. To preserve design integrity when rescaling or rotating designs in your software, always rescale or rotate designs using the handles directly on-screen.

12945-19 Tile 19

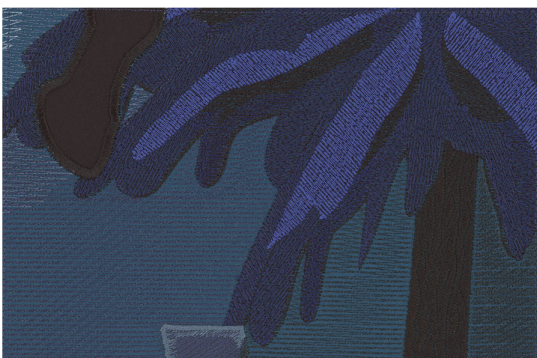
Size Inches: Size mm: Stitch Count:
6.91 X 4.58 in. 175.51 X 116.33 mm 9397 St.



■	1.Black Fabric Placement Stitch.....	0020
■	2.Cut Line and Tackdown.....	0020
■	3.Sky.....	4152
■	4.Sky.....	4032
■	5.Sky.....	4133
■	6.Horse and Tree.....	0020
■	7.Horse Highlights.....	4515
■	8.Tree.....	3323
■	9.Seam Stitch/Match Fabric.....	4133

12945-20 Tile 20

Size Inches: Size mm: Stitch Count:
6.87 X 4.57 in. 174.50 X 116.08 mm 26165 St.



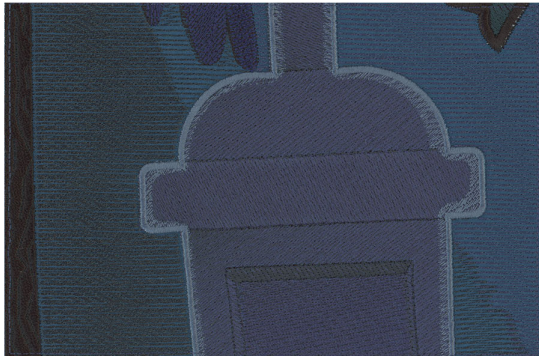
■	1.Black Fabric Placement Stitch.....	0020
■	2.Cut Line and Tackdown.....	0020
■	3.Sky.....	3666
■	4.Tree Trunk.....	0020
■	5.Sky.....	4133
■	6.Sky.....	4032
■	7.Sky.....	4152
■	8.Horse Cover Stitch and Tree.....	0020
■	9.Tree.....	3323
■	10.Tree.....	3612
■	11.Headstone.....	4133
■	12.Headstone.....	3666
■	13.Headstone.....	3842
■	14.Seam Stitch/Match Fabric.....	4133

Note: Some designs in this collection may have been created using unique special stitches and/or techniques. To preserve design integrity when rescaling or rotating designs in your software, always rescale or rotate designs using the handles directly on-screen.

12945-21 Tile 21

Size Inches: Size mm: Stitch Count:

6.86 X 4.57 in. 174.24 X 116.08 mm 37020 St.

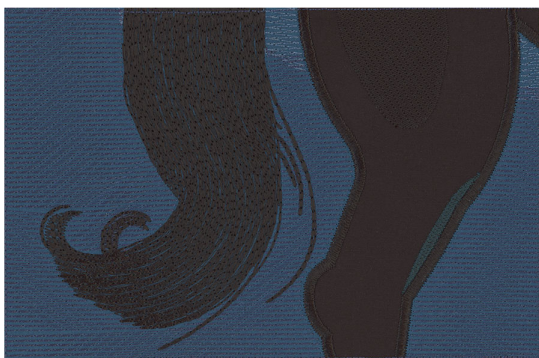


■	1.Black Fabric Placement Stitch.....	0020
■	2.Cut Line and Tackdown.....	0020
■	3.Sky.....	4133
■	4.Sky.....	3666
■	5.Tree and Cape Cover Stitch.....	0020
■	6.Cape Highlight.....	4515
■	7.Tree.....	3323
■	8.Tree Trunk.....	0020
■	9.Headstone.....	4133
■	10.Headstone.....	3666
■	11.Headstone.....	3842
■	12.Seam Stitch/Match Fabric.....	4133

12945-22 Tile 22

Size Inches: Size mm: Stitch Count:

6.87 X 4.56 in. 174.50 X 115.82 mm 15379 St.



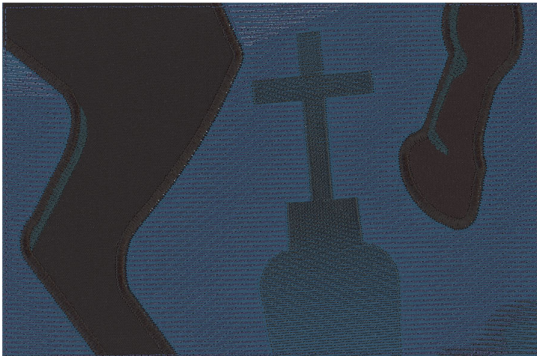
■	1.Black Fabric Placement Stitch.....	0020
■	2.Cut Line and Tackdown.....	0020
■	3.Sky.....	4032
■	4.Sky.....	4133
■	5.Horse Cover Stitch and Detail.....	0020
■	6.Horse Highlight.....	4515
■	7.Seam Stitch/Match Fabric.....	4133

Note: Some designs in this collection may have been created using unique special stitches and/or techniques. To preserve design integrity when rescaling or rotating designs in your software, always rescale or rotate designs using the handles directly on-screen.

12945-23 Tile 23

Size Inches: Size mm: Stitch Count:

6.87 X 4.58 in. 174.50 X 116.33 mm 11318 St.

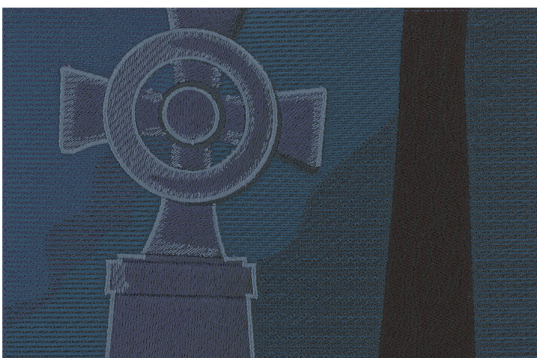


■	1.Black Fabric Placement Stitch.....	0020
■	2.Cut Line and Tackdown.....	0020
■	3.Sky.....	4032
■	4.Sky.....	4133
■	5.Headstone and Sky.....	3666
■	6.Horse Cover Stitch.....	0020
■	7.Horse Highlights.....	4515
■	8.Seam Stitch/Match Fabric.....	4133

12945-24 Tile 24 | 12945-24

Size Inches: Size mm: Stitch Count:

6.86 X 4.57 in. 174.24 X 116.08 mm 37855 St.



■	1.Sky.....	4133
■	2.Sky.....	3666
■	3.Tree Trunk.....	0020
■	4.Headstone.....	4133
■	5.Headstone.....	3666
■	6.Headstone.....	3842
■	7.Seam Stitch/Match Fabric.....	4133

Note: Some designs in this collection may have been created using unique special stitches and/or techniques. To preserve design integrity when rescaling or rotating designs in your software, always rescale or rotate designs using the handles directly on-screen.

12945-25 Tile 25 | 12945-25

Size Inches: Size mm: Stitch Count:

6.88 X 4.57 in. 174.75 X 116.08 mm 28652 St.

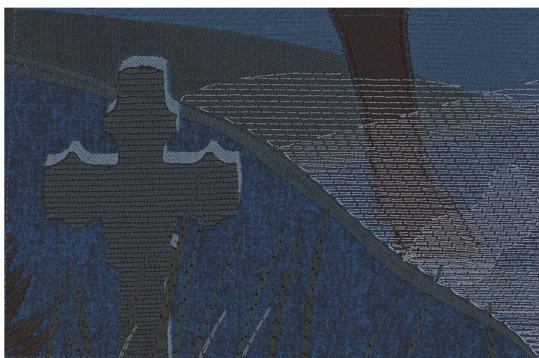


	1.Navy Fabric Placement Stitch.....	4133
	2.Cut Line and Tackdown.....	4133
	3.Sky.....	4133
	4.Sky.....	3666
	5.Tree Trunk.....	0020
	6.Hill.....	3666
	7.Headstone.....	4133
	8.Headstone.....	3666
	9.Headstone.....	3842
	10.Hill Cover Stitch.....	3666
	11.Plant.....	0020
	12.Plants.....	4515
	13.Grass.....	5233
	14.Grass.....	5374
	15.Pumpkin.....	3842
	16.Pumpkin.....	1776
	17.Seam Stitch/Match Fabric.....	4133

12945-26 Tile 26 | 12945-26

Size Inches: Size mm: Stitch Count:

6.87 X 4.56 in. 174.50 X 115.82 mm 20708 St.



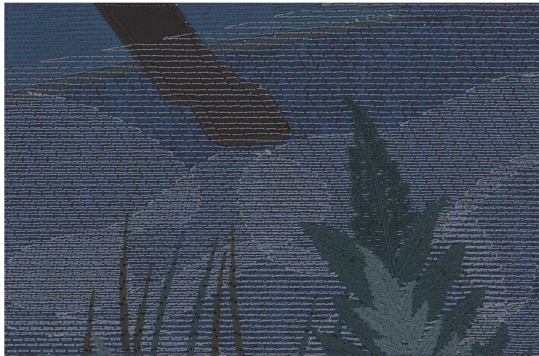
	1.Navy Fabric Placement Stitch.....	4133
	2.Cut Line and Tackdown.....	4133
	3.Black Fabric Placement Stitch.....	0020
	4.Cut Line and Tackdown.....	0020
	5.Hill.....	3666
	6.Hill Cover Stitch.....	3666
	7.Sky.....	4133
	8.Horse Cover Stitch.....	0020
	9.Fog.....	3852
	10.Headstone.....	3842
	11.Headstone.....	3666
	12.Headstone.....	0020
	13.Grass.....	4515
	14.Grass.....	4643
	15.Grass.....	5374
	16.Grass.....	5233
	17.Plant.....	0020
	18.Seam Stitch/Match Fabric.....	4133

Note: Some designs in this collection may have been created using unique special stitches and/or techniques. To preserve design integrity when rescaling or rotating designs in your software, always rescale or rotate designs using the handles directly on-screen.

12945-27 Tile 27 | 12945-27

Size Inches: Size mm: Stitch Count:

6.84 X 4.58 in. 173.74 X 116.33 mm 21075 St.













	1.Navy Fabric Placement Stitch.....	4133
	2.Cut Line and Tackdown.....	4133
	3.Black Fabric Placement Stitch.....	0020
	4.Cut Line and Tackdown.....	0020
	5.Sky.....	4133
	6.Headstone.....	3666
	7.Hill Cover Stitch.....	3666
	8.Horse Cover Stitch.....	0020
	9.Fog.....	3852
	10.Grass.....	5374
	11.Grass.....	4515
	12.Back Plant.....	4515
	13.Front Plants.....	4643
	14.Seam Stitch/Match Fabric.....	4133

12945-28 Tile 28 | 12945-28

Size Inches: Size mm: Stitch Count:

6.87 X 4.56 in. 174.50 X 115.82 mm 25060 St.



	1.Fog.....	3852
	2.Pumpkin.....	3842
	3.Pumpkin.....	1776
	4.Headstone.....	4133
	5.Headstone.....	3666
	6.Headstone.....	3842
	7.Plants.....	4643
	8.Plant.....	4515
	9.Grass.....	5233
	10.Seam Stitch/Match Fabric.....	4133

Note: Some designs in this collection may have been created using unique special stitches and/or techniques. To preserve design integrity when rescaling or rotating designs in your software, always rescale or rotate designs using the handles directly on-screen.

12945-29 Tile 29 | 12945-29

Size Inches: Size mm: Stitch Count:

6.87 X 4.56 in. 174.50 X 115.82 mm 33585 St.



	1.Pumpkin.....	3842
	2.Pumpkin.....	1776
	3.Glow.....	1355
	4.Pumpkin Face.....	0622
	5.Pumpkin Face.....	0660
	6.Pumpkin.....	1010
	7.Grass.....	4643
	8.Grass.....	4515
	9.Grass.....	5374
	10.Plant.....	0020
	11.Plants.....	4515
	12.Grass.....	5233
	13.Grass.....	4643
	14.Seam Stitch/Match Fabric.....	4133

12945-30 Tile 30 | 12945-30

Size Inches: Size mm: Stitch Count:

6.87 X 4.57 in. 174.50 X 116.08 mm 28902 St.



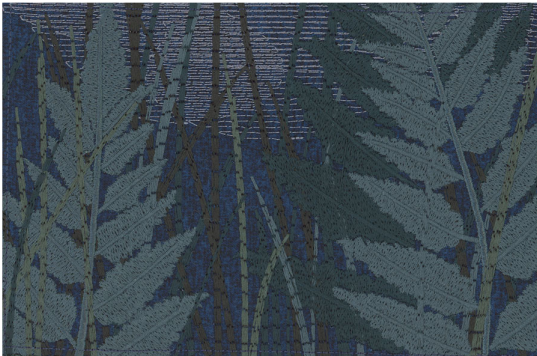
	1.Headstone.....	3842
	2.Headstone.....	3666
	3.Headstone.....	0020
	4.Plant.....	0020
	5.Grass.....	4515
	6.Grass.....	4643
	7.Grass.....	5374
	8.Plants.....	4515
	9.Grass.....	5233
	10.Seam Stitch/Match Fabric.....	4133

Note: Some designs in this collection may have been created using unique special stitches and/or techniques. To preserve design integrity when rescaling or rotating designs in your software, always rescale or rotate designs using the handles directly on-screen.

12945-31 Tile 31 | 12945-31

Size Inches: Size mm: Stitch Count:

6.85 X 4.56 in. 173.99 X 115.82 mm 46923 St.

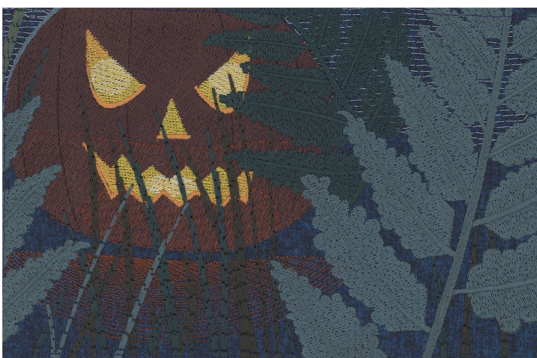


	1.Fog.....	3852
	2.Grass.....	4515
	3.Grass.....	5374
	4.Grass.....	4643
	5.Back Plant.....	4515
	6.Front Plants.....	4643
	7.Grass.....	4643
	8.Grass.....	5233
	9.Grass.....	4515
	10.Seam Stitch/Match Fabric.....	4133

12945-32 Tile 32 | 12945-32

Size Inches: Size mm: Stitch Count:

6.87 X 4.57 in. 174.50 X 116.08 mm 45117 St.



	1.Fog.....	3852
	2.Pumpkin	3842
	3.Pumpkin	1776
	4.Glow.....	1355
	5.Pumpkin Face.....	0622
	6.Pumpkin Face.....	0660
	7.Pumpkin Face.....	1010
	8.Grass.....	5374
	9.Grass.....	4515
	10.Grass.....	4643
	11.Back Plant.....	4515
	12.Front Plants.....	4643
	13.Grass.....	5233
	14.Seam Stitch/Match Fabric.....	4133