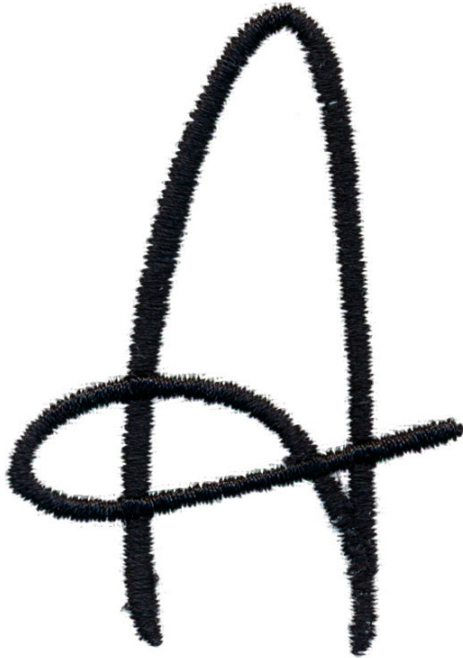


Note: Some designs in this collection may have been created using unique special stitches and/or techniques. To preserve design integrity when rescaling or rotating designs in your software, always rescale or rotate designs using the handles directly on-screen.



12877-01 Penned Uppercase A

Size Inches: Size mm: Stitch Count:

2.23 X 1.56 in. 56.64 X 39.62 mm 1531 St.

■ 1.Single Color Design.....0020

12877-02 Penned Uppercase B

Size Inches: Size mm: Stitch Count:

2.40 X 1.16 in. 60.96 X 29.46 mm 1458 St.

■ 1.Single Color Design.....0020



Note: Some designs in this collection may have been created using unique special stitches and/or techniques. To preserve design integrity when rescaling or rotating designs in your software, always rescale or rotate designs using the handles directly on-screen.



12877-03 Penned Uppercase C

Size Inches: Size mm: Stitch Count:

2.26 X 0.95 in. 57.40 X 24.13 mm 751 St.

■ 1.Single Color Design.....0020



12877-04 Penned Uppercase D

Size Inches: Size mm: Stitch Count:

2.33 X 1.25 in. 59.18 X 31.75 mm 1334 St.

■ 1.Single Color Design.....0020

Note: Some designs in this collection may have been created using unique special stitches and/or techniques. To preserve design integrity when rescaling or rotating designs in your software, always rescale or rotate designs using the handles directly on-screen.



12877-05 Penned Uppercase E

Size Inches: Size mm: Stitch Count:

2.49 X 0.80 in. 63.25 X 20.32 mm 787 St.

■ 1.Single Color Design.....0020

12877-06 Penned Uppercase F

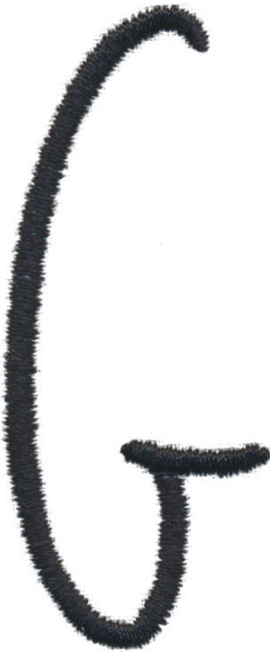
Size Inches: Size mm: Stitch Count:

2.50 X 0.66 in. 63.50 X 16.76 mm 786 St.

■ 1.Single Color Design.....0020



Note: Some designs in this collection may have been created using unique special stitches and/or techniques. To preserve design integrity when rescaling or rotating designs in your software, always rescale or rotate designs using the handles directly on-screen.



12877-07 Penned Uppercase G

Size Inches: Size mm: Stitch Count:

2.30 X 0.93 in. 58.42 X 23.62 mm 808 St.

■ 1.Single Color Design.....0020



12877-08 Penned Uppercase H

Size Inches: Size mm: Stitch Count:

2.47 X 0.63 in. 62.74 X 16.00 mm 1055 St.

■ 1.Single Color Design.....0020

Note: Some designs in this collection may have been created using unique special stitches and/or techniques. To preserve design integrity when rescaling or rotating designs in your software, always rescale or rotate designs using the handles directly on-screen.

12877-09 Penned Uppercase I

Size Inches: Size mm: Stitch Count:

2.22 X 0.47 in. 56.39 X 11.94 mm 606 St.

■ 1.Single Color Design.....0020



12877-10 Penned Uppercase J

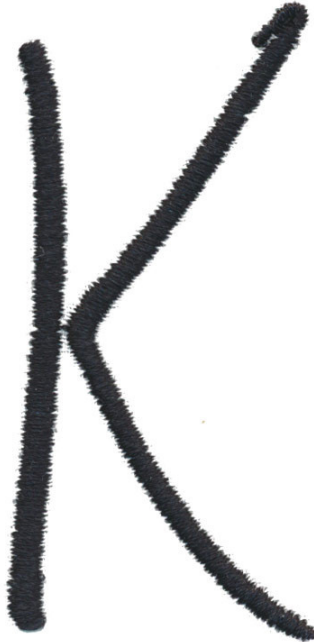
Size Inches: Size mm: Stitch Count:

2.35 X 0.83 in. 59.69 X 21.08 mm 672 St.

■ 1.Single Color Design.....0020



Note: Some designs in this collection may have been created using unique special stitches and/or techniques. To preserve design integrity when rescaling or rotating designs in your software, always rescale or rotate designs using the handles directly on-screen.



12877-11 Penned Uppercase K

Size Inches: Size mm: Stitch Count:
2.45 X 1.24 in. 62.23 X 31.50 mm 1090 St.

■ 1.Single Color Design.....0020

12877-12 Penned Uppercase L

Size Inches: Size mm: Stitch Count:
2.54 X 0.77 in. 64.52 X 19.56 mm 640 St.

■ 1.Single Color Design.....0020



Note: Some designs in this collection may have been created using unique special stitches and/or techniques. To preserve design integrity when rescaling or rotating designs in your software, always rescale or rotate designs using the handles directly on-screen.



12877-13 Penned Uppercase M

Size Inches: Size mm: Stitch Count:

2.42 X 1.68 in. 61.47 X 42.67 mm 1681 St.

■ 1.Single Color Design.....0020



12877-14 Penned Uppercase N

Size Inches: Size mm: Stitch Count:

2.46 X 1.36 in. 62.48 X 34.54 mm 1306 St.

■ 1.Single Color Design.....0020

Note: Some designs in this collection may have been created using unique special stitches and/or techniques. To preserve design integrity when rescaling or rotating designs in your software, always rescale or rotate designs using the handles directly on-screen.



12877-15 Penned Uppercase O

Size Inches: Size mm: Stitch Count:

2.21 X 1.06 in. 56.13 X 26.92 mm 1170 St.

■ 1.Single Color Design.....0020



12877-16 Penned Uppercase P

Size Inches: Size mm: Stitch Count:

2.27 X 1.19 in. 57.66 X 30.23 mm 1124 St.

■ 1.Single Color Design.....0020

Note: Some designs in this collection may have been created using unique special stitches and/or techniques. To preserve design integrity when rescaling or rotating designs in your software, always rescale or rotate designs using the handles directly on-screen.



12877-17 Penned Uppercase Q

Size Inches: Size mm: Stitch Count:

2.42 X 1.06 in. 61.47 X 26.92 mm 1462 St.

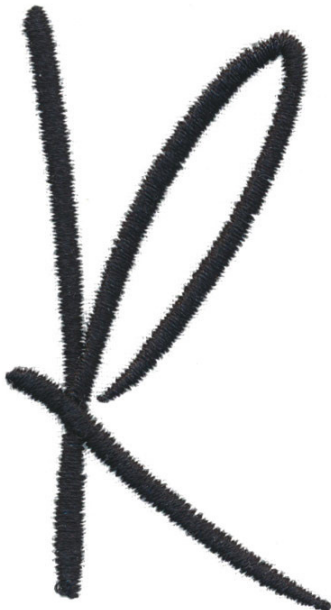
■ 1.Single Color Design.....0020

12877-18 Penned Uppercase R

Size Inches: Size mm: Stitch Count:

2.43 X 1.31 in. 61.72 X 33.27 mm 1377 St.

■ 1.Single Color Design.....0020



Note: Some designs in this collection may have been created using unique special stitches and/or techniques. To preserve design integrity when rescaling or rotating designs in your software, always rescale or rotate designs using the handles directly on-screen.



12877-19 Pinned Uppercase S

Size Inches: Size mm: Stitch Count:

2.62 X 0.89 in. 66.55 X 22.61 mm 1065 St.

■ 1.Single Color Design.....0020



12877-20 Pinned Uppercase T

Size Inches: Size mm: Stitch Count:

2.48 X 1.34 in. 62.99 X 34.04 mm 721 St.

■ 1.Single Color Design.....0020

Note: Some designs in this collection may have been created using unique special stitches and/or techniques. To preserve design integrity when rescaling or rotating designs in your software, always rescale or rotate designs using the handles directly on-screen.



12877-21 Penned Uppercase U

Size Inches: Size mm: Stitch Count:

2.42 X 1.15 in. 61.47 X 29.21 mm 1289 St.

■ 1.Single Color Design.....0020

12877-22 Penned Uppercase V

Size Inches: Size mm: Stitch Count:

2.70 X 0.75 in. 68.58 X 19.05 mm 990 St.

■ 1.Single Color Design.....0020



Note: Some designs in this collection may have been created using unique special stitches and/or techniques. To preserve design integrity when rescaling or rotating designs in your software, always rescale or rotate designs using the handles directly on-screen.



12877-23 Penned Uppercase W

Size Inches: Size mm: Stitch Count:

2.75 X 1.48 in. 69.85 X 37.59 mm 1402 St.

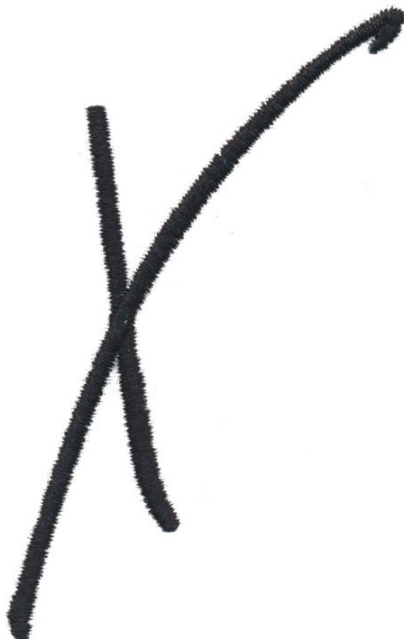
■ 1.Single Color Design.....0020

12877-24 Penned Uppercase X

Size Inches: Size mm: Stitch Count:

3.00 X 1.67 in. 76.20 X 42.42 mm 1135 St.

■ 1.Single Color Design.....0020



Note: Some designs in this collection may have been created using unique special stitches and/or techniques. To preserve design integrity when rescaling or rotating designs in your software, always rescale or rotate designs using the handles directly on-screen.



12877-25 Penned Uppercase Y

Size Inches: Size mm: Stitch Count:

2.35 X 0.87 in. 59.69 X 22.10 mm 1093 St.

■ 1.Single Color Design.....0020

12877-26 Penned Uppercase Z

Size Inches: Size mm: Stitch Count:

2.36 X 1.08 in. 59.94 X 27.43 mm 941 St.

■ 1.Single Color Design.....0020



Note: Some designs in this collection may have been created using unique special stitches and/or techniques. To preserve design integrity when rescaling or rotating designs in your software, always rescale or rotate designs using the handles directly on-screen.

12877-27 Penned Lowercase a

Size Inches: Size mm: Stitch Count:
0.85 X 0.60 in. 21.59 X 15.24 mm 511 St.

■ 1.Single Color Design.....0020



12877-28 Penned Lowercase b

Size Inches: Size mm: Stitch Count:
2.51 X 0.51 in. 63.75 X 12.95 mm 893 St.

■ 1.Single Color Design.....0020



Note: Some designs in this collection may have been created using unique special stitches and/or techniques. To preserve design integrity when rescaling or rotating designs in your software, always rescale or rotate designs using the handles directly on-screen.

12877-29 Penned Lowercase c

Size Inches: Size mm: Stitch Count:
0.68 X 0.56 in. 17.27 X 14.22 mm 330 St.

■ 1.Single Color Design.....0020



12877-30 Penned Lowercase d

Size Inches: Size mm: Stitch Count:
3.08 X 0.90 in. 78.23 X 22.86 mm 1228 St.

■ 1.Single Color Design.....0020



Note: Some designs in this collection may have been created using unique special stitches and/or techniques. To preserve design integrity when rescaling or rotating designs in your software, always rescale or rotate designs using the handles directly on-screen.

12877-31 Penned Lowercase e

Size Inches: Size mm: Stitch Count:
0.74 X 0.33 in. 18.80 X 8.38 mm 325 St.

■ 1.Single Color Design.....0020



12877-32 Penned Lowercase f

Size Inches: Size mm: Stitch Count:
2.92 X 0.70 in. 74.17 X 17.78 mm 1001 St.

■ 1.Single Color Design.....0020



Note: Some designs in this collection may have been created using unique special stitches and/or techniques. To preserve design integrity when rescaling or rotating designs in your software, always rescale or rotate designs using the handles directly on-screen.

12877-33 Penned Lowercase g

Size Inches: Size mm: Stitch Count:

2.10 X 0.55 in. 53.34 X 13.97 mm 718 St.

■ 1.Single Color Design.....0020



12877-34 Penned Lowercase h

Size Inches: Size mm: Stitch Count:

2.40 X 0.83 in. 60.96 X 21.08 mm 808 St.

■ 1.Single Color Design.....0020



Note: Some designs in this collection may have been created using unique special stitches and/or techniques. To preserve design integrity when rescaling or rotating designs in your software, always rescale or rotate designs using the handles directly on-screen.



12877-35 Penned Lowercase i

Size Inches: Size mm: Stitch Count:
2.56 X 0.48 in. 65.02 X 12.19 mm 544 St.

■ 1.Single Color Design.....0020



12877-36 Penned Lowercase j

Size Inches: Size mm: Stitch Count:
1.54 X 0.16 in. 39.12 X 4.06 mm 317 St.

■ 1.Single Color Design.....0020

Note: Some designs in this collection may have been created using unique special stitches and/or techniques. To preserve design integrity when rescaling or rotating designs in your software, always rescale or rotate designs using the handles directly on-screen.



12877-37 Penned Lowercase k

Size Inches: Size mm: Stitch Count:
 2.56 X 0.46 in. 65.02 X 11.68 mm 747 St.

■ 1.Single Color Design.....0020



12877-38 Penned Lowercase l

Size Inches: Size mm: Stitch Count:
 2.80 X 0.55 in. 71.12 X 13.97 mm 848 St.

■ 1.Single Color Design.....0020

Note: Some designs in this collection may have been created using unique special stitches and/or techniques. To preserve design integrity when rescaling or rotating designs in your software, always rescale or rotate designs using the handles directly on-screen.

12877-39 Penned Lowercase m

Size Inches: Size mm: Stitch Count:

1.37 X 0.88 in. 34.80 X 22.35 mm 662 St.

■ 1.Single Color Design.....0020



12877-40 Penned Lowercase n

Size Inches: Size mm: Stitch Count:

0.91 X 0.57 in. 23.11 X 14.48 mm 346 St.

■ 1.Single Color Design.....0020



Note: Some designs in this collection may have been created using unique special stitches and/or techniques. To preserve design integrity when rescaling or rotating designs in your software, always rescale or rotate designs using the handles directly on-screen.

12877-41 Penned Lowercase o

Size Inches: Size mm: Stitch Count:
0.75 X 0.58 in. 19.05 X 14.73 mm 346 St.

■ 1.Single Color Design.....0020



12877-42 Penned Lowercase p

Size Inches: Size mm: Stitch Count:
2.02 X 0.81 in. 51.31 X 20.57 mm 830 St.

■ 1.Single Color Design.....0020



Note: Some designs in this collection may have been created using unique special stitches and/or techniques. To preserve design integrity when rescaling or rotating designs in your software, always rescale or rotate designs using the handles directly on-screen.



12877-43 Penned Lowercase q

Size Inches: Size mm: Stitch Count:
2.20 X 0.53 in. 55.88 X 13.46 mm 797 St.

■ 1.Single Color Design.....0020

12877-44 Penned Lowercase r

Size Inches: Size mm: Stitch Count:
0.82 X 0.45 in. 20.83 X 11.43 mm 300 St.

■ 1.Single Color Design.....0020



Note: Some designs in this collection may have been created using unique special stitches and/or techniques. To preserve design integrity when rescaling or rotating designs in your software, always rescale or rotate designs using the handles directly on-screen.



12877-45 Penned Lowercase s

Size Inches: Size mm: Stitch Count:

1.48 X 0.61 in. 37.59 X 15.49 mm 632 St.

■ 1.Single Color Design.....0020

12877-46 Penned Lowercase t

Size Inches: Size mm: Stitch Count:

2.09 X 0.72 in. 53.09 X 18.29 mm 577 St.

■ 1.Single Color Design.....0020



Note: Some designs in this collection may have been created using unique special stitches and/or techniques. To preserve design integrity when rescaling or rotating designs in your software, always rescale or rotate designs using the handles directly on-screen.

12877-47 Penned Lowercase u

Size Inches: Size mm: Stitch Count:
 0.81 X 0.69 in. 20.57 X 17.53 mm 497 St.

■ 1.Single Color Design.....0020



12877-48 Penned Lowercase v

Size Inches: Size mm: Stitch Count:
 0.80 X 0.43 in. 20.32 X 10.92 mm 332 St.

■ 1.Single Color Design.....0020



Note: Some designs in this collection may have been created using unique special stitches and/or techniques. To preserve design integrity when rescaling or rotating designs in your software, always rescale or rotate designs using the handles directly on-screen.



12877-49 Penned Lowercase w

Size Inches: Size mm: Stitch Count:

1.32 X 1.13 in. 33.53 X 28.70 mm 664 St.

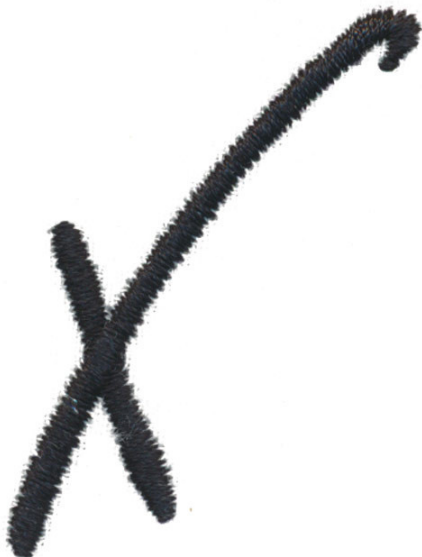
■ 1.Single Color Design.....0020

12877-50 Penned Lowercase x

Size Inches: Size mm: Stitch Count:

1.56 X 1.14 in. 39.62 X 28.96 mm 596 St.

■ 1.Single Color Design.....0020



Note: Some designs in this collection may have been created using unique special stitches and/or techniques. To preserve design integrity when rescaling or rotating designs in your software, always rescale or rotate designs using the handles directly on-screen.



12877-51 Penned Lowercase y

Size Inches: Size mm: Stitch Count:

2.10 X 0.75 in. 53.34 X 19.05 mm 721 St.

■ 1.Single Color Design.....0020

12877-52 Penned Lowercase z

Size Inches: Size mm: Stitch Count:

2.13 X 0.54 in. 54.10 X 13.72 mm 600 St.

■ 1.Single Color Design.....0020

